

In this issue

- Understanding the new RSV vaccine
- New walk-in clinics for Diabetic Eye Screening
- Drop-in vaccination clinics for pregnant people

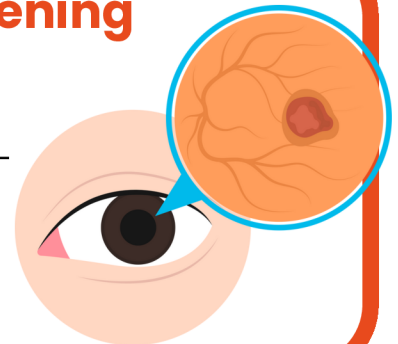
Understanding the new RSV vaccine

This year, a new winter vaccine is being offered to help protect vulnerable groups against RSV - a common winter virus that causes cold like symptoms, but can be serious for certain groups of people. The vaccine is now being offered to people aged 75-79, pregnant women to protect their babies, and young children at high risk of severe infection.



New walk-in clinics for Diabetic Eye Screening

If you have Diabetes, you are at a higher risk of losing your vision. Diabetic Eye Screening is an effective way to stop this. To make screening more accessible, walk-in clinics are starting across Stoke-on-Trent from January 2025. These will take place at Hanley Health Centre on the first Wednesday of each month, and Tunstall Primary Care Centre on the first Thursday of each month.



Drop-in vaccination clinics for pregnant people

Some vaccines, such as the inactivated seasonal flu vaccine and the whooping cough vaccine, are recommended during pregnancy to protect the health of mother and baby. Flu, Whooping Cough (Pertussis) and RSV vaccinations are offered to pregnant women at drop-in clinics at the Royal Stoke Hospital, Monday to Friday.

For full details call 01782 672 111



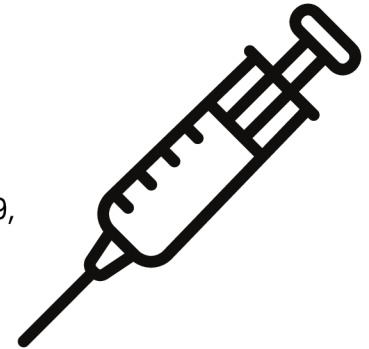
We have lots more information available. If you're looking for local health information or support, chat with your local champion.

In this issue

- Understanding the new RSV vaccine
- New walk-in clinics for Diabetic Eye Screening
- Drop-in vaccination clinics for pregnant people

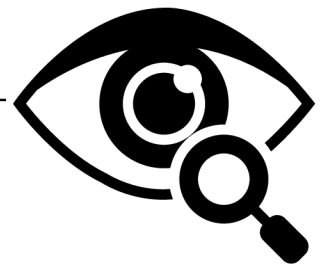
Understanding the new RSV vaccine

This year, a new winter vaccine is being offered to help protect vulnerable groups against RSV - a common winter virus that causes cold like symptoms, but can be serious for certain groups of people. The vaccine is now being offered to people aged 75-79, pregnant women to protect their babies, and young children at high risk of severe infection.



New walk-in clinics for Diabetic Eye Screening

If you have Diabetes, you are at a higher risk of losing your vision. Diabetic Eye Screening is an effective way to stop this. To make screening more accessible, walk-in clinics are starting across Stoke-on-Trent from January 2025. These will take place at Hanley Health Centre on the first Wednesday of each month, and Tunstall Primary Care Centre on the first Thursday of each month.



Drop-in vaccination clinics for pregnant people

Some vaccines, such as the inactivated seasonal flu vaccine and the whooping cough vaccine, are recommended during pregnancy to protect the health of mother and baby. Flu, Whooping Cough (Pertussis) and RSV vaccinations are offered to pregnant women at drop-in clinics at the Royal Stoke Hospital, Monday to Friday.

For full details call 01782 672 111



We have lots more information available. If you're looking for local health information or support, chat with your local champion.